

README file for NGS data over the Colorado, USA
Last Updated: April 20, 2021

For more information please contact:
Kevin Ahlgren (kevin.ahlgren@noaa.gov)

Files in Directory:

1. Surface Gravity Dataset:

- a. Name: Colorado_gravity_data.dat
- b. Description: point file with gravity data in the form of free-air anomalies based on the NGA/NGS gravity dataset. This is a 'cleaned' dataset. Number of points = 59,303.
- c. Geographic Limits: 35°N - 40°N, 250°E - 258°E
- d. File Format: ASCII with columns associated with (latitude, longitude, orthometric height (above MSL), gravity, survey ID, year).

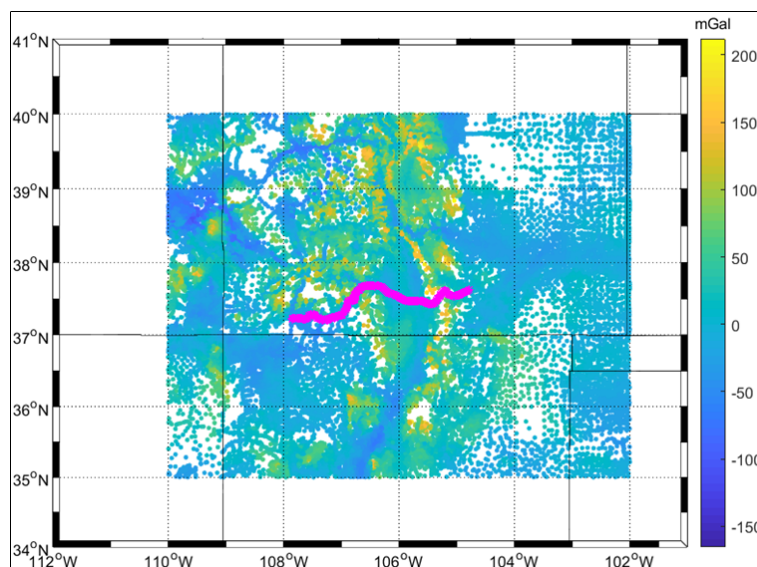


Figure 1: Surface gravity data with GSVS17 points. The GSVS17 points are NOT included in the Colorado_gravity_data.dat and can be used as an independent comparison.

2. Digital Elevation Model (DEM):

- a. Name: Colorado_dem.grd
- b. Description: based on the SRTM v4.1 data from <https://srtm.csi.cgiar.org/srtmdata/>
 - i. Jarvis, A., H.I. Reuter, A. Nelson, E. Guevara, 2008, Hole-filled SRTM for the globe Version 4, available from the CGIAR-CSI SRTM 90m Database (<http://srtm.csi.cgiar.org>) .
- c. Geographic Limits: 35°N - 40°N, 250°E - 258°E

- d. Grid Spacing: 3" (0.000833333°)
- e. Center cell registration
- f. File Format: DTU/GRAVSOFT grid format. Text file read from North to South and West to East. (First row is 40°N from 250° to 258°).

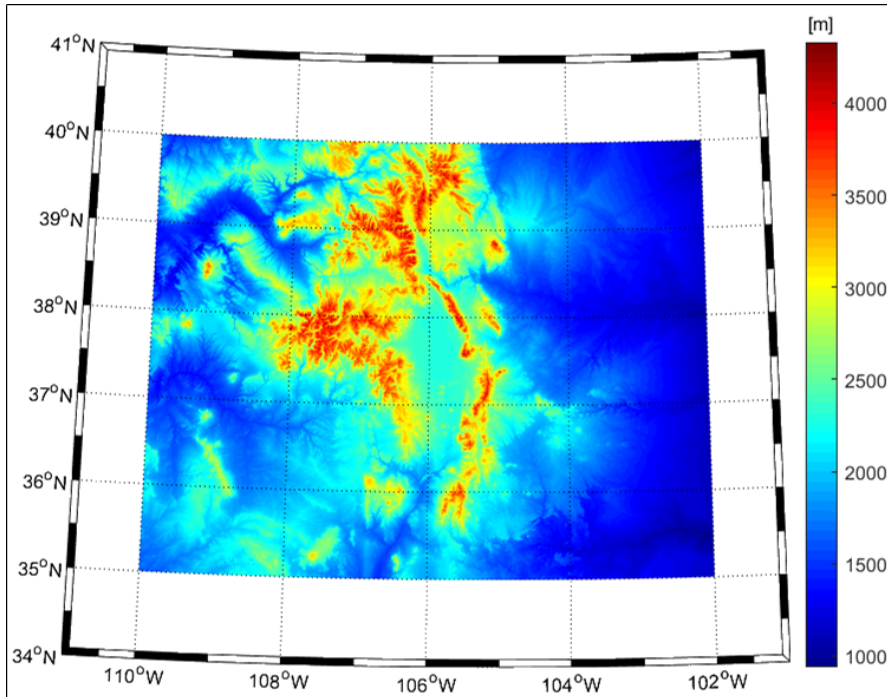


Figure 2: DEM data for Colorado.

3. GPS Leveling Data:

- a. Name: Colorado_GPSBM_v2.2_08Feb18.txt
- b. Description: point file with GPS Leveling data from Colorado and surrounding states. 509 total GPSL marks but very sparse due to mountainous region. 467 marks are from the NGS Integrated Database (IDB) and 42 marks from NGS OPUS-Share Tool (<https://www.ngs.noaa.gov/OPUS/>).
- c. Geographic Limits: 35°N - 40°N, 250°E - 258°E
- d. File Format: ASCII comma separated file with fields (index, latitude, longitude, igs08_geodetic_ht, navd88_orthometric_ht, pid, state, designation).