



Four NGS web products move from Beta to Production

NOAA's National Ocean Service sent this bulletin at 05/09/2024 10:01 AM EDT

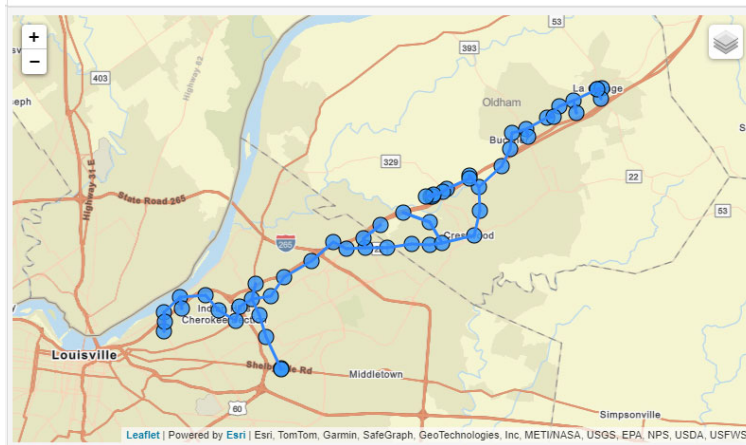
Having trouble viewing this email? [View it as a Web page.](#)

NGS News

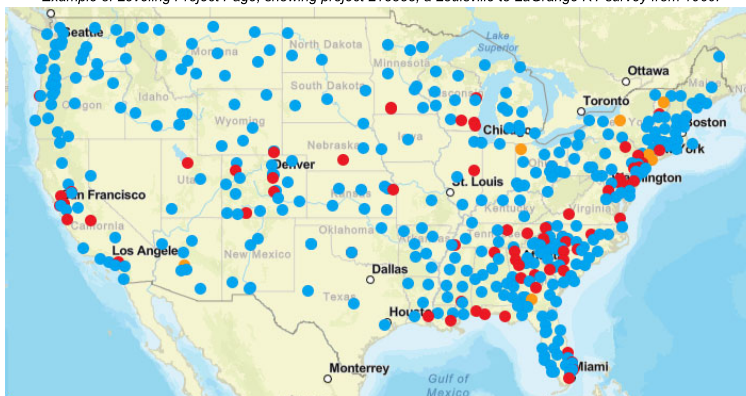
Four new online tools are now available for the public, providing easier access to NGS data

After extensive testing through our Beta site, NGS is making the following four online tools available to the public as official products offered on the geodesy.noaa.gov website:

- [DSWorld Web](#) - enables users to submit updated information on survey marks available on NGS datasheets.
- [Leveling Project Page](#) - simplifies searches for mark and observation information for an entire leveling project.
- [Calibration Baselines \(CBL\) Web Map](#) - provides quick and easy access to the latest CBL information.
- [Passive Marks Page](#) - for user-friendly datasheet access, including graphics, maps, and project information.



Example of Leveling Project Page, showing project L18355, a Louisville to LaGrange KY survey from 1960.



Calibration Baselines (CBL) Web Map showing available GOOD (Blue) SUSPECT (Yellow) or DISTURBED (Red) calibration stations.

Powered by



[Privacy Policy](#) | [Cookie Statement](#) | [Help](#)